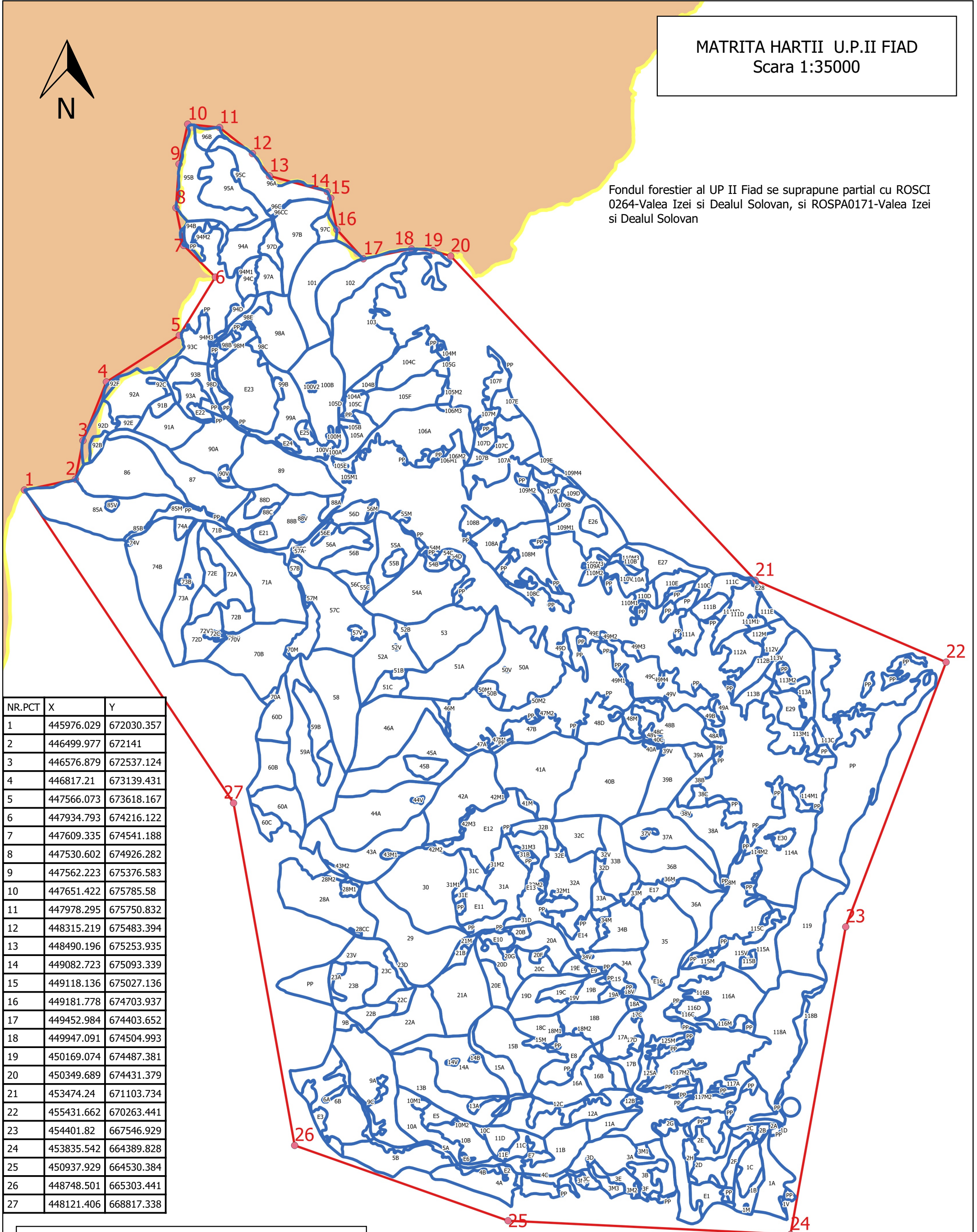


MATRITA HARTII U.P.II FIAD
Scara 1:35000



Fondul forestier al UP II Fiad se suprapune partial cu ROSCI 0264-Valea Izei si Dealul Solovan, si ROSPA0171-Valea Izei si Dealul Solovan



NR.PCT	X	Y
1	445976.029	672030.357
2	446499.977	672141
3	446576.879	672537.124
4	446817.21	673139.431
5	447566.073	673618.167
6	447934.793	674216.122
7	447609.335	674541.188
8	447530.602	674926.282
9	447562.223	675376.583
10	447651.422	675785.58
11	447978.295	675750.832
12	448315.219	675483.394
13	448490.196	675253.935
14	449082.723	675093.339
15	449118.136	675027.136
16	449181.778	674703.937
17	449452.984	674403.652
18	449947.091	674504.993
19	450169.074	674487.381
20	450349.689	674431.379
21	453474.24	671103.734
22	455431.662	670263.441
23	454401.82	667546.929
24	453835.542	664389.828
25	450937.929	664530.384
26	448748.501	665303.441
27	448121.406	668817.338

Legenda

- ▭ FOND FORESTIER UP II FIAD
- COORDONATE STEREO 70 PUNCTE INCADRARE
- CONTUR POLIGON INCADRARE
- ▭ ROSCI0264
- ▭ ROSPA0171

EXECUTATNT:
S.C. BIOS&CO S.R.L.